



Overview

Fungicides

Aliette

Flint

Folicur EW

Delaro

Luna Tranquility

Proline

Proline west

Propulse

Prosaro

Prosaro west

Reason

Scala

Serenade MAX

Serenade SOIL

Serenade CPB

Home » Products » Fungicides » Stratego

Stratego

Stratego® has two distinct modes of action, to provide preventative and systemic disease control, enabling built-in resistance management. Stratego is now registered for leaf disease control in soybeans.

Overview

Application Tips

Overview

- Excellent performance on a broad spectrum of cereal diseases including tan spot and *septoria*
- Now registered for use on important leaf diseases in soybeans
- Provides insurance against costly yield and quality loss
- Sustained residual control and limited curative activity
- Crop-safe and easy to use
- Registered for ground and aerial application
- Leaf diseases can cause up to 10 to 15% yield loss

Search

Region: Ontario

MyBayer

>> Forgot Password

Stratego
 Stratego PRO
 Tattoo C
 Herbicides
 Insecticides
 Other
 Seed
 Seed Treatments

Bayer Links

Bayer Global
 Bayer CropScience
 Global

Wide Window of Application

- In cereals, apply Stratego with your herbicides for early-season disease protection with no additional costs
- A follow-up application should be planned at the critical flag leaf stage for optimal return on investment and disease protection
- In soybeans, apply Stratego from R1-R5 (R2-R3 or at onset of pod formation is optimal)

Broad-Spectrum Disease Control

- Stratego combines the power of new generation Trifloxystrobin with Propiconazole
- Trifloxystrobin is a member of the strobilurin family. Trifloxystrobin provides highly effective, locked-in, long-lasting surface protection and antisporulant activity.
- Propiconazole provides systemic activity in plant tissues
- When these chemistries work together, the results are longer-lasting disease control and improved protection of treated plant tissue. Try as it might, disease has no way in.

Rate

200 mL/ac. (40 ac./jug).

Timing - cereals

- Apply Stratego at the early stages of disease development, which normally occur from 4-leaf to flag-leaf stage
- Up to two applications can be made to suit growing conditions and disease pressures

Single Application

- 4-leaf to early heading

Two Applications

- First application - 4-leaf to flag-leaf
- Second application - Up to early heading (not within 14 days of first application)

For best protection from disease apply Stratego in a preventative spray program. Caution: strobilurin fungicides can increase mycotoxin levels if applied at heading.

Timing - soybeans

Find My Local Bayer Rep



Don't know your local Bayer CropScience representative?



- R1-R5 (R2-R3 or at onset of pod formation is optimal)

Rainfastness

Rainfast 1 hour after application.

Water Volume

- Ground - 10 to 20 gal./ac.
- Aerial - 4.5 gal./ac.

Packaging

8 L jug.

▼ Active Ingredients

Trifloxystrobin - Group 11
Propiconazole - Group 3

▼ Resistance Management

Stratego is an ideal tool for resistance management because it includes actives from two fungicide families (Group 3 and Group 11 fungicides)

Resistance patterns cannot be predicted, so use Stratego as part of an established resistance management program and rotate with other fungicides from different groups that control the same diseases

▼ Crops

There are no associated crops for this product.

▼ Pests Controlled

Asian soybean rust
Crown rust
Leaf rust
Net blotch
Powdery mildew
Scald
Septoria
Septoria leaf blotch
Stem rust
Stripe rust
Tan spot

▼ Labels and MSDS

- Stratego Label
- Stratego MSDS

▼ Registered Tank Mixes - Cereals

- Buctril M
- Puma¹²⁰ Super
- Refine Extra

Tank-mix options in wheat

Stratego + Buctril M

- Add Buctril[®] M at 0.4 L/ac. (20 ac./jug) and Stratego at 0.2 L/ac. (40 ac./jug).
- Apply when plants are at the 4 leaf stage up to the early flag leaf stage.
- Tank-mix order: Stratego, Buctril M.

Stratego + Buctril M + Puma¹²⁰ Super

- Add Stratego at 0.2 L/ac. (40 ac./jug), Buctril M at 0.4 L/ac. (20 ac./jug) and Puma^{®120} Super at 0.385 to 0.770 L/ac. (40 to 20 ac./jug).
- For control of grassy and broadleaf weeds and early-season leaf diseases.
- Apply when plants are at the 4 leaf stage up to the 3rd tiller stage.

- Tank-mix order: Stratego, Buctril M, Puma¹²⁰ Super.

Stratego + Buctril M + Puma Advance*

- Add Stratego at 0.2 L/ac. (40 ac./jug), Buctril M at 0.4 L/ac. (20 ac./jug) and Puma Advance at 0.412 L/ac. (20 ac./jug).
- For use on winter, spring and durum wheat.
- Apply when plants are at the 4 leaf stage up to the 3rd tiller stage.
- Tank-mix order: Stratego, Buctril M, Puma Advance.

Stratego + Velocity m3*

- Add Stratego at 0.2 L/ac. (40 ac./jug) and Velocity™ A at 0.2 L/ac. (20 ac./jug) and Velocity B at 0.34 L/ac. (20 ac./jug).
- For use on spring wheat.
- Apply when the crop is at the 4 leaf stage up to the 3rd tiller stage.
- Tank-mix order: Stratego, Velocity m3 (Velocity A + Velocity B).

Stratego + Infinity*

- Add Stratego at 0.2 L/ac. (40 ac./jug) and Infinity® at 0.34 L/ac. (20 ac./jug).
- For use on spring and winter wheat.
- Apply when the crop is at the 4 leaf stage up to the flag leaf stage.
- Tank-mix order: Stratego, Infinity.

Stratego + Puma Advance + Infinity*

- Add Stratego at 0.2 L/ac. (40 ac./jug), Puma Advance at 0.412 L/ac. (20 ac./jug) and Infinity at 0.34 L/ac. (20 ac./jug).
- For use on spring wheat.
- Apply when the crop is at the 4 leaf stage up to the 3rd tiller stage.
- Tank-mix order: Stratego, Puma Advance, Infinity.

Tank-mix options in wheat and barley

Stratego + Puma¹²⁰ Super + Refine Extra

- Add Refine Extra® at 8 g/ac. (10 ac./80 g pouch) and Stratego at 0.2 L/ac. (40 ac./jug) and Puma¹²⁰ Super at 0.385 to 0.770 L/ac. (40 to 20 ac./jug).
- Additional surfactant is not required for a Refine Extra tank mix.
- For control of grassy and broadleaf weeds and early-season leaf diseases.

- Apply when plants are at the 4 leaf stage up to the 3rd tiller stage.
 - Tank-mix order: Refine Extra, Stratego, Puma¹²⁰ Super.
- * *These tank-mix options are not yet registered and are under review by the PRMA.*

The Three Ps of Mesostemic Power

Stratego is a mesostemic fungicide providing preventive and systemic control.

PREVENTION

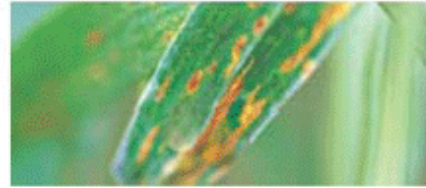
- Stratego prevents spore germination so diseases can't penetrate the plant. Plant tissue isn't damaged so the plant doesn't waste energy fighting infection.

PERSISTENCE

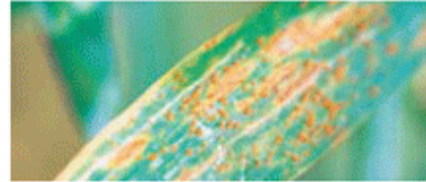
- Stratego provides a long-lasting barrier against disease. Stratego stays in control even when applied during changing weather conditions.

PROTECTION

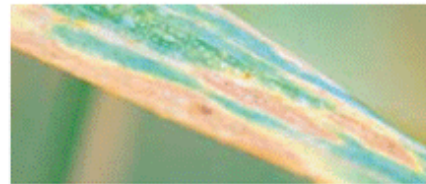
- Stratego stays close to the plant surface providing limited curative activity.
- The benefits are increased disease control with better green leaf retention – resulting in higher yields at harvest.



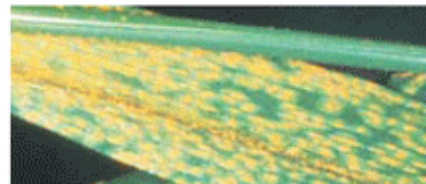
Wheat – Tan spot



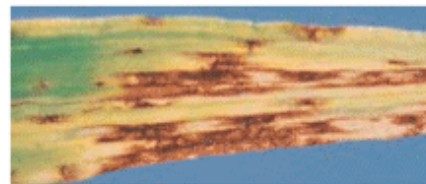
Wheat – Leaf rust



Wheat – Septoria leaf blotch



Oat – Crown rust



Barley – Net blotch

▼ Province of Registration

Alberta
British Columbia
Manitoba
New Brunswick
Newfoundland
Northwest Territories
Nova Scotia
Nunavut
Ontario
Prince Edward Island
Quebec
Saskatchewan
Yukon

Last updated:
April 21, 2015

- » General Terms of Use
- » Privacy Statement
- » About
- » General Terms of Use

Social Media
Print
Bookmark