

Nealta Miticide

technology sheet

A unique mode of action for exceptional mite control – no matter the life stage.

- Knockdown and residual control of European red mites, two-spotted spider mites and McDaniel spider mites at all life stages, including eggs
- New, Group 25 active ingredient is highly effective against mites that may have developed tolerance to other acaricides
- Safe for beneficial insects including bees, as well as predatory mites and insects

Active ingredients

Cyflumetofen – Group 25

Formulation

Suspension concentrate

One case contains

4 x 4 L jugs

Storage

Protect from freezing.

Crops

Grapes
Pome fruits
Strawberries
Tomatoes

Application timing

Should be the first miticide application of the season; before damage thresholds are reached or when local specialists report increasing mite populations

Pests controlled

In grapes.

European red mite
Two-spotted spider mite

In pome fruits.

European red mite
McDaniel spider mite
Two-spotted spider mite

In strawberries.

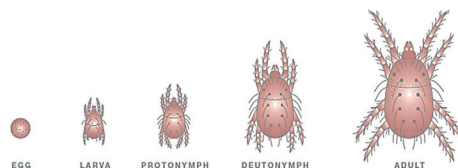
Two-spotted spider mite

In tomatoes.

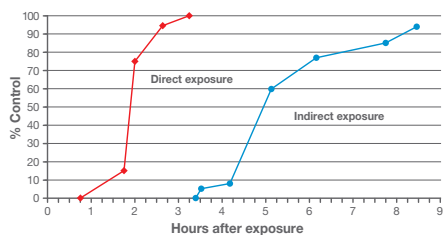
Two-spotted spider mite

Stage

All life stages (eggs, nymphs, adults)

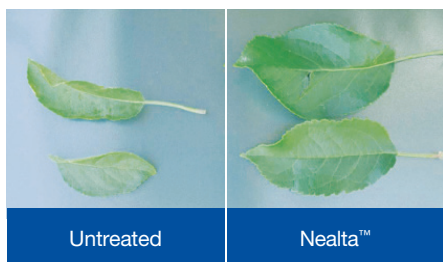


Control of two-spotted spider mites.



Source: BASF

Proven control of mites.



Source: BASF US

Application rates

One jug of Nealta miticide will treat 10 acres.

Grapes, pome fruits, strawberries, tomatoes

400 mL/ac (1L/ha)

Water volume

Field sprayer application

Min. 500 L/ha (50 gal/ac)¹

Airblast application

¹ Higher water volumes are recommended for thorough coverage.

Mixing order

1. Ensure the spray tank is clean before use.
2. Fill the tank 1/2 full of water and start agitation.
3. Add the required amount of Nealta to the tank.
4. Continue agitation while filling the remainder of the spray tank.
5. After use, clean the spray tank according to label precautions.

Application tips

Rainfastness – 1 hour.

Restricted entry interval – 12 hours.

Use Nealta as the first application in your mite control program. Because Nealta controls all life stages including eggs, there is no need to delay application until eggs have hatched.

Allow for 14 to 21 days between applications.

Do not apply Nealta more than 2 times per growing season.

Rotate miticides with different modes of action to ensure that each generation is only exposed to Nealta once.

Pre-harvest interval

Grapes: 14 days after application

Pome fruits: 7 days after application

Strawberries: 1 day after application

Tomatoes: 3 days after application

Tank mixes

None on label.

For more information

Call **AgSolutions®** Customer Care at 1-877-371-BASF (2273) or visit **agsolutions.ca**.

Always read and follow label directions.

AgSolutions is a registered trade-mark of BASF Corporation; NEALTA is a trade-mark of BASF SE; all used with permission by BASF Canada Inc. © 2015 BASF Canada Inc.