

Products



Endigo™ Insecticide

| Uses | Application Information | Tank Mixes | Technical Information | Label and MSDS |
|--|--|--|---|--|
| <p>CROPS</p> <p>Soybeans; Dried shelled beans;</p> <p>FOR MANAGEMENT OF</p> <p>Soybean aphids; Bean leaf beetle;</p> <p>View more use info</p> | <p>73 mL/ac (180 mL/ha)</p> <p>Water Volume</p> <p>Ground application: Apply in a minimum water volume of 15 gallons per acre Aerial appli...</p> <p>View more application info</p> | <p>There are no registered tank mixes for this product.</p> <p>View more tank-mixes info</p> | <p>CHEMISTRY GROUP</p> <p>Group 3 and Group 4 insecticides</p> <p>ACTIVE INGREDIENTS</p> <p>Thiamethoxam and Lambda-cyhalothrin</p> <p>REI: 12 hours</p> <p>View more technical info</p> | <p>Label</p> <p>Download</p> <p>MSDS</p> <p>Download</p> <p>View more labels</p> |

About this Product

Fast knockdown, long lasting control

With a superior formulation and two proven active ingredients, Endigo gives fast knockdown and residual control of soybean aphids and bean leaf beetles in

your soybean field.

Endigo delivers the proven performance of industry-leading insecticides: lambda-cyhalothrin (Group 3) and thiamethoxam (Group 4).

Product Benefits

- Superior formulation technology – easy to handle and use
- Fast knockdown – rapidly removes the threat of economic damage
- Residual protection
- Robust rates of two active ingredients – effective rotational partner for resistance management

Packaging

Case: 4 x 3.78 L

Uses

- Soybeans
- Dried shelled beans

For management of

- Soybean aphids
- Bean leaf beetle

Application Information

Use Rates

73 mL/ac (180 mL/ha)

Water Volume

- **Ground application:** Apply in a minimum water volume of 15 gallons per acre
- **Aerial application:** Apply in minimum spray volume of 20 L/ha (2 gallons/acre)

Application Method

Application Information

- Repeat sprays at a minimum of 7 day intervals depending on the presence of significant populations as determined by local monitoring.
- Applications should be made based on local bean leaf beetle and soybean aphid thresholds.

Scouting for soybean aphids

Soybean fields should be scouted and 20-30 random plants checked across the field for aphids (avoid field edges). Count all aphids on each leaf of the entire plant.

Action threshold (R1-R5): 250 aphids per plant and actively increasing on 80% of the plants.

Scouting for bean leaf beetles

Scouting at V3-R4

- In 10 areas of the field pick 5 plants.
- On each plant, pick trifoliolate leaves that are fully expanded from the centre of the plant canopy.
- Discard the least and most damaged leaflets from each trifoliolate collected.
- Determine the percent defoliation that has occurred.

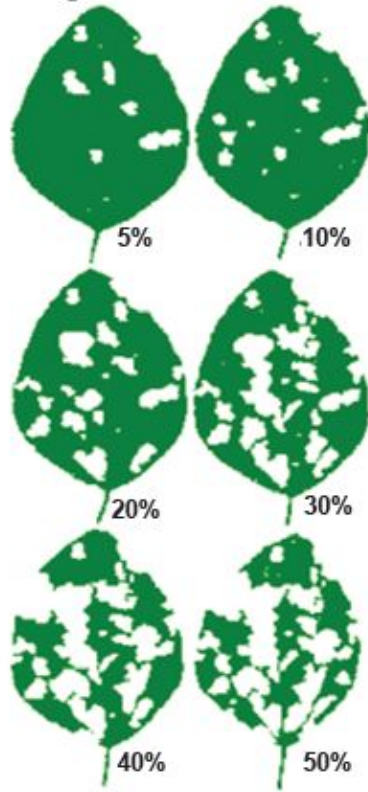
Scouting at R5-R6 in IP and Seed Fields

- If 10% of the pods on the plants have feeding injury and the beetles are still active in the field, a spray is warranted. However, remember to consider days-to-harvest intervals.

Bean leaf beetle thresholds (based on soybean development stage):

- **Pre-bloom (i.e. vegetative stages):** 30% defoliation
- **Bloom (R1) to pod-fill (R4):** 15% defoliation
- **Pod-fill (R5) to maturity (R6, unless pod feeding is observed):** 25% defoliation

Estimating defoliation



Effects of Weather

- Avoid applications when heavy rain is forecast
- DO NOT apply during periods of dead calm.
- Avoid application of this product when winds are gusty.

Use Restrictions

- Soybeans: Do not apply within 30 days of harvest.
- Dried shelled beans: Do not apply within 21 days of harvest.
- Allow at least 7 days between treatments.
- DO NOT use more than 3 applications per season.
- DO NOT graze or harvest treated forage, straw or hay for livestock feed.
- DO NOT apply this product within 45 days of planting if seeds were treated with a neonicotinoid product.
- DO NOT exceed a total of 540 mL/ha of Endigo Insecticide per season. Do not exceed a total of 84 g a.i. of lambda-cyhalothrin containing products per season.

Tank Mixes

There are no registered tank mixes for this product.

Technical Information

Chemistry Group

Group 3 and Group 4 insecticides

Mode of Action

Thiamethoxam:

- Controls insects primarily through ingestion
- Penetrates through the leaf surface and moves in a locally systemic manner
- Controls insects that feed on the underside of leaves
- Provides long residual control of sucking insects

Lambda-cyhalothrin:

- Controls insects primarily through contact
- Remains mostly on leaf surfaces
- Zeon technology
- Provides control of multiple insect species

Labels & MSDS

Label

[Download](#)

Description For the control of insects on soybeans and dried shelled beans.

Active ingredient Thiamethoxam and Lambda-cyhalothrin

Approved provinces AB, BC, MB, NB, NF, NS, ON, PE, QC, SK

Approved crops Beans, dry, Beans, lablab (dry), Soybeans, Soybeans (conventional), Soybeans, glyphosate-tolerant

MSDS

[Download](#)

Disclaimer – ALWAYS read and follow label directions. Please use this information above only as a guideline and not an exact description.

© 2015 Syngenta